

Great location, convenient to shopping, restaurants and services.



PROPERTY INFORMATION

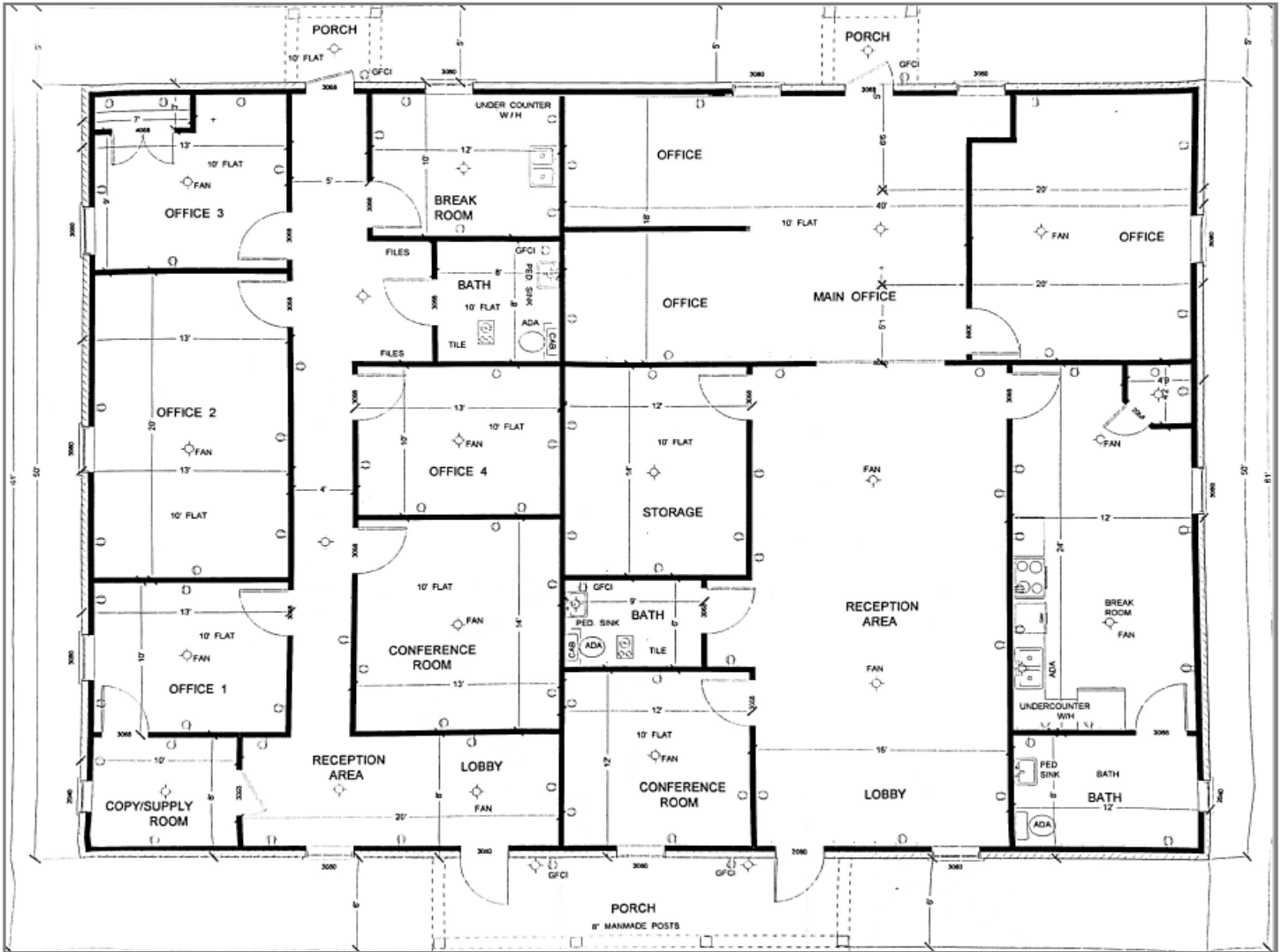
- Beautiful, red brick building; built in 2004, divided into 2 suites.
- Suite A is 1500 SF, Suite B is 2000 SF
- Both suites have restrooms, executive office, boardroom and break area.
- Beautifully landscaped, with sprinkler system
- Minutes away from I35 and Chisholm Trail Tollway and Texas Health Huguley Hospital
- **Building Size** 3,500 SF
- **Sale Price:** \$787,500 (\$225.00/SF)



Tim Williams, President
office: 817.632.6252
cell: 817.729.1205
twilliams@trojancre.com
www.trojancre.com

Office Location:
2401 Scott Avenue, Suite# 118
Fort Worth, Texas 76103

Site Plan



Beautiful, red brick building; built in 2004, divided into 2 suites.

(Suite A is 1500 SF, Suite B is 2000 SF)

Tim Williams, President
office: 817.632.6252
cell: 817.729.1205
twilliams@trojancre.com
www.trojancre.com

Office Location:
2401 Scott Avenue, Suite# 118
Fort Worth, Texas 76103